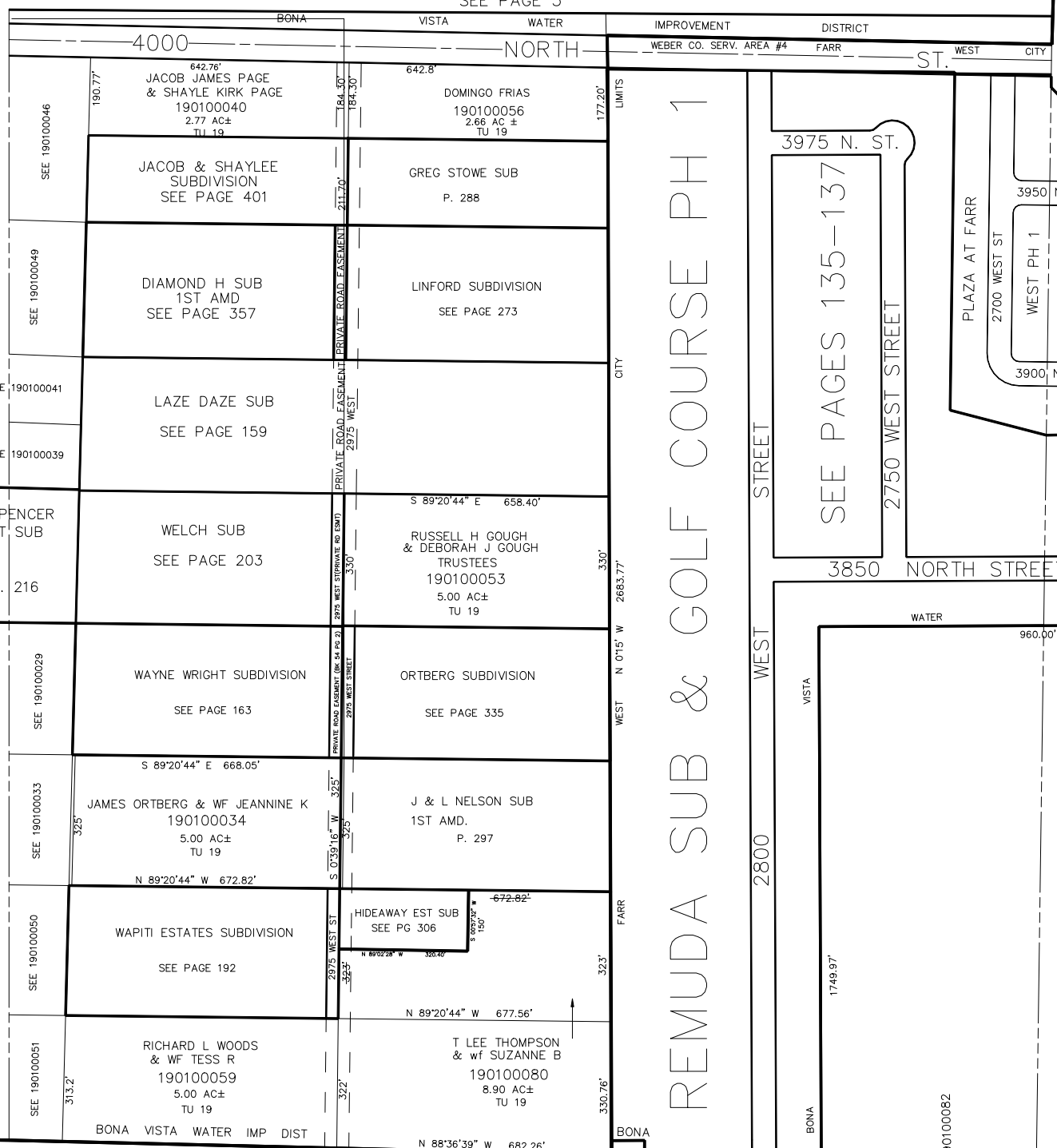


N.E. 1/4  
SECTION 22, T.7N., R.2W., S.L.B. & M.

IN WEBER COUNTY  
SCALE 1" = 200'  
SEE PAGE 3

TAXING UNIT: 19, 307, 308



PLAIN CITY WEST WEBER CO. SERV. AREA #4 CITY LIMITS

19 REMUDA SUB AND GOLF COURSE PH 3 SEE P. 166 & 167 SEE PAGE 10